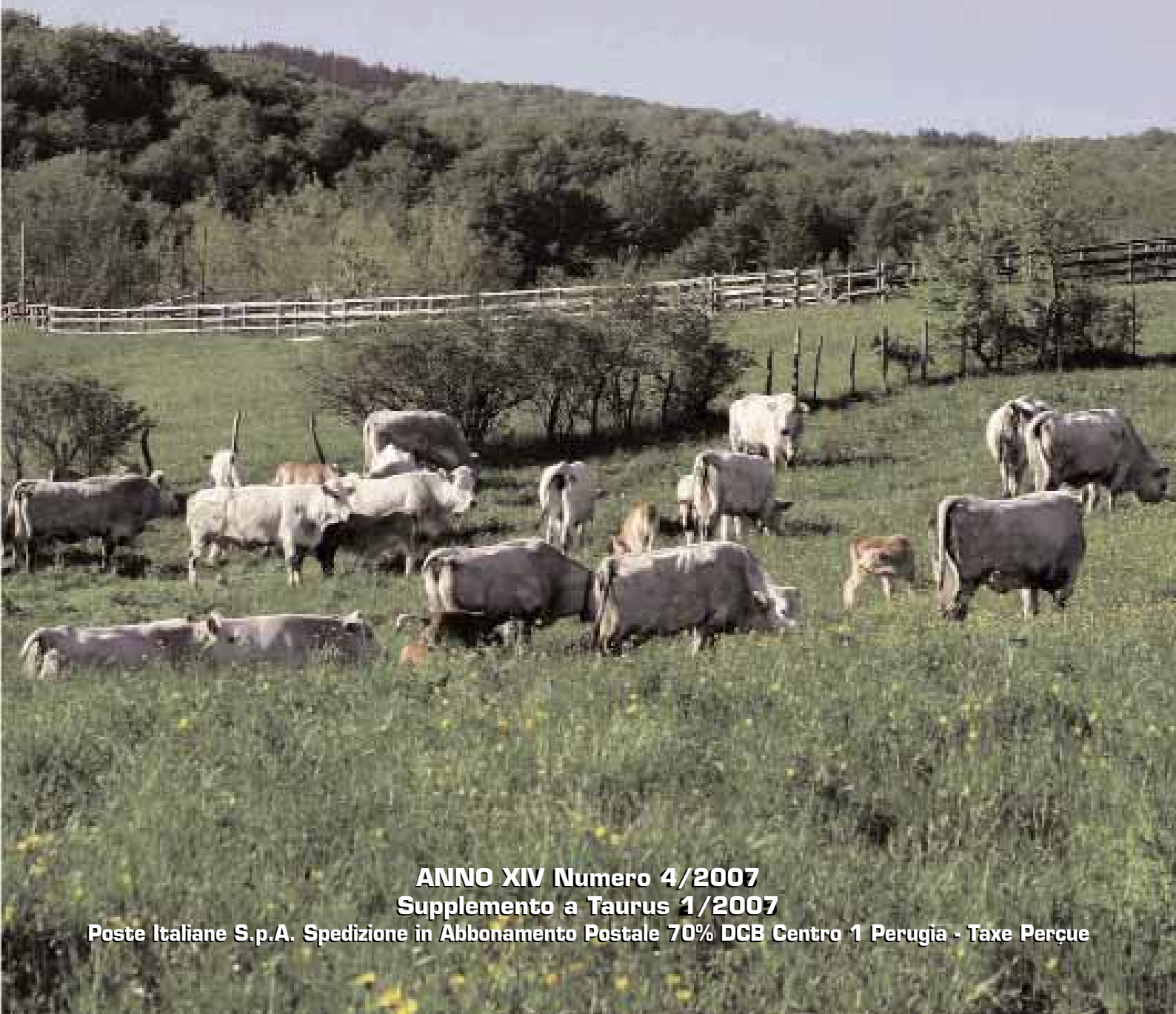


# *International* **TAURUS**

THE INTERNATIONAL MAGAZINE OF MARCHIGIANA,  
CHIANINA, ROMAGNOLA, MAREMMANA  
AND PODOLICA CATTLE



**ANNO XIV Numero 4/2007**

**Supplemento a Taurus 1/2007**

**Poste Italiane S.p.A. Spedizione in Abbonamento Postale 70% DCB Centro 1 Perugia - Taxe Perçue**



# *Ville Unite Romagnola*

Progressive genetics with a taste of tradition

*Our results are built on passion,  
dedication and brood cows like this:*

## *Ville Unite Ira*

**Excellent 90 points (000M) Cow Index 117 Rank 97**

*(V.U. Eolo x V.U. Clara by Azzurro)*

**Grand Champion Cow - 18th Romagnola Nationals**

*Rocca S. Casciano, Forlì - June 3rd -5th 2005*



### **VILLE UNITE ROMAGNOLA**

Via Viazza, 27 - 48010 Gambellara (RA)

Telefono e fax +39 544 551 298 - Cell. +39 335 280100

E-mail: [villeunite@sira.it](mailto:villeunite@sira.it) web page: [www.romagnola.it](http://www.romagnola.it)



## ANABIC

Associazione Nazionale Allevatori  
Bovini Italiani da Carne

*President:*

**Fausto Luchetti**

*Director:*

**Paolo Canestrari**

## TAURUS INTERNATIONAL

*Managing Director:*  
Paolo Canestrari

*Editor in chief:*  
Roberta Guarcini

*Editorial Secretary:*  
Bernardetta Sensi

*With the contribution of:*  
Roberta Guarcini, Matteo Ridolfi,  
Antonio Vagniluca, Chiara Matteucci.

*Translations by:*  
Itaca Servizi Linguistici, Bastia Umbra  
Matteo Ridolfi

*Pictures by:*  
Gaia Martuscelli, Gaetano Panza,  
Archivio ANABIC.

*PrePress:*  
GRAFOX - Perugia

*Printing:*  
Tipolitografia Grifo - Perugia

*Editorial office, subscriptions,  
advertisements:*

ANABIC

06132 - San Martino in Colle

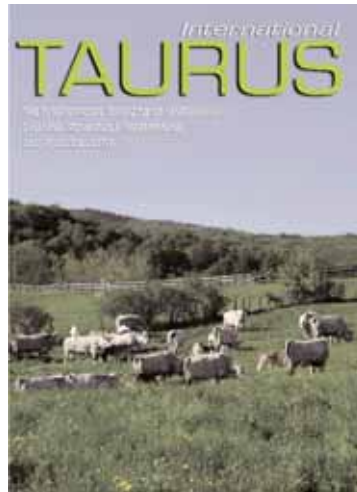
Tel. 075 6070021

Fax 075 607598

e-mail: [anabic@anabic.it](mailto:anabic@anabic.it)

Internet: [www.anabic.it](http://www.anabic.it)

Perugia - Italy



## 4

XXXXXXXXXXXXXXXXXX

## 5

Auctions under the tree

## 9

Updates worthy of framing

The series of updates for Experts for 2006 are now over

## 12

“Excellent” cows: let’s get to know them

## 22

The first auction of the Fabriano Heifers Centre

## 24

Selection comes naturally at Torrecchia Nuova!

## 28

Animal welfare:

what has changed since 1 January 2007

**XXXXXXXXXX**

di **Roberta Guarcini**  
Ufficio Centro Genetico

## Auctions under the tree



*Regio di Sant'Anna, Top Price at the Chianina auction*

The winter auctions at the genetic centre finally saw the return to the three standard groups making their appearance for each breed. Taking place on this past 12th, 13th and 14th December with its customary programme, the auction featured – in this order – the Marchigiana on the opening day, followed on the next two days by the Chianina and Romagnola, respectively. It was thus up to the Marchigiana (Table 1) to break the ice with 6 sires equally divided between AI and NS. Interest-

Table No. 1 Marchigiana									
Collar No.	Name	Father	AI NS	BSI	Test ADG	Morph. Val. Pts	Breeder	Buyer	Price Euro
120	Rodeo Valdolmo	Nek x Dolce	IA	128,5	1.499	86,3	Smargiassi Piero - AN	Domenicone Bruno TE	5.750
102	Renoir	Birbo x Nerino	IA	127,3	1.651	84,0	Cagnetti Tommaso	Zootecnica Serralta MC	3.100
119	Rubens	Omero x Nettuno	IA	123,7	1.636	84,0	Mattei Simone	Az. Agr. Moretti PU	4.500
134	Ravvento	Lezio x Enea	FN	110,9	1.528	82,0	Donninelli Armando	Conestà Marco MC	2.900
116	Rambo	Erode x Lezio	FN	109,0	1.265	83,0	Ciccioli G.Franco	Federico Fernando AQ	3.450
136	Rambo	Omero x Fulmine	FN	106,8	1.492	84,0	Mattei Giovanni Matteo	Di Mercurio Costantino TE	4.050

Table No. 1 Chianina									
Collar No.	Name	Father	AI NS	BSI	Test ADG	Morph. Val. Pts	Breeder	Buyer	Price Euro
138	Ronaldo	Dazzo x Grido	IA	134,8	1.520	82,0	Az. Agr. F.lli Fabbrini	Az. Agr. Pandolfo - PZ	3.000
123	Rogiolo	Ligio x Dazzo	IA	130,5	1.858	83,0	Bastianini Tullio	Az. Agr. Ponte a Rigo - SI	3.800
139	Ricò	Fanfullo x Dazzo	IA	128,2	1.626	84,0	Luchetti B.&C. - PG	Berti Enrico - PG	4.150
107	Rotto	Escato x Gigante	IA	123,1	1.677	84,0	Az. Agr. Palazzo di Nardi	Az. Agr. Ponte a Rigo - SI	4.350
124	Ronaldino	Mandrillo x Beccaccino	IA	123,0	1.573	83,0	Guerrieri Enzo - LI	Bacchettoni Antonio - PG	3.450
108	Regio	Diro x Deodato	IA	121,4	1.810	84,0	Mencarelli Emilio - AR	Az. Agr. Bagnani - FI	4.650
106	Raimondo	Limone x Liso di P.	IA	121,0	1.460	83,0	Ceccobao Alessandro - SI	F.lli Fabbretti - AR	3.800
126	Roneo	Dazzo x Elvo di F.	IA	120,8	1.313	82,0	Ceccobao Alessandro - SI	Bigi Umberto - RE	3.550
137	Rambo	Eugenio x Dazzo	IA	119,6	1.419	85,0	Marcucci Giancarlo - PG	Luchetti B.&C. - PG	3.700
122	Romano	Lio di MB x Dazzo	IA	118,7	1.321	84,0	Favilli Orlando - LI	Ferri Marini L. - AR	3.650
105	Rio	Lio di MB x Drea	IA	115,1	1.890	82,0	Az. Agr. Pratoleva - VT	Az. Agr. Pandolfo - PZ	3.650

ing for their morphology, test results and pedigree combinations, these animals were evaluated by a fairly large group of breeders, who expressed positive judgements on the quality of the animals, also setting a particularly brisk pace for the auction due to the presence of numerous buyers. Commanding the top price was Rodeo Valdolmo from Ancona, a son of Neck out of Dolce, presented by Piero Smargiassi and purchased for 5,750 euro by Bruno Domenicone of Teramo. This promising animal, standing out for his long trunk, muscle development, and structural solidity, was signed up with the Bulls Centre of Macerata. The second-best price of the day, totalling 4,500 euro, was fetched by Rubens, a vigorous son of Omero presented by Simone Mattei of Pesaro, and purchased by the Moretti Giuseppe farm of Acqualagna, (Pesaro-Urbino). Lastly, worthy of note was the large group of representatives of breeders from Abruzzo, coming from the various provinces, whom we hope to see participate actively in similar numbers in the coming auctions as well!

The Chianina (Table 2), featured on the middle day, did not disappoint the traditional affection of its breeders for the test-end auctions. Of the 11 bull calves featured, on-

ly one was suitable for natural service, confirming the high genetic level of the entire group of animals. The highest price, 4,650 euro, was attained by Regio of S. Anna. A vigorous son of Diro out of Deodato, bred in Arezzo by Emilio Mencarelli and purchased by the Bagnani farm of Incisa, he showed excellent test data, a balanced morphology, and a pedigree with a deep, open maternal line. The second-highest price, 4,350 euro, was obtained by Rotto of Siena, presented by the Palazzo farm of Nardi, for the originality of his pedigree (Escato x Gigante), morphological correctness, and depth of his maternal line. Lastly, worthy of note is the fact that the last bull auctioned, Rio del Pietreto from Viterbo, son of Lio out of Drea, was purchased by the Pandolfo farm of Potenza, to whom we wish the best for the breed's success in the region of Basilicata! Even though it was not a record auction in terms of prices, the Chianina breeders once again confirmed their closeness to the selection work carried out by the ANABIC at the Genetic Centre. A pleasant side note in connection with the Chianina auction was the round of Parmesan cheese offered to the breeders by the "Chianina di Canossa" farm, Umberto and Mauro Bigi's well-known breeding farm in Reggio Emil-

ia, the recent winner of the national “Oscar Green 2006” prize for the “Communication and Transparency” category, which they wanted to dedicate to all the Chianina breeders. This important recognition was awarded to them, according to the official statement, “for the capacity to communicate the value of an ancient, yet extremely modern, product such as Chianina beef”. To the Bigi farm, which has been breeding and promoting the Chianina with passion and extreme professionalism for years, go the sincerest congratulations from all the breeders and from the ANABIC.

For the Romagnola (Table 3) also, in the centre of the ring for the closing auction, there was no lack of support from breeders. As for the Chianina, the animals qualified for AI were clearly in the majority: 9 out of the 11 judged. The catalogue bulls all came from farms that traditionally take part in the shows, supporting their test data with show-level genetics. In his opening greetings, ANABIC President Fausto Luchetti complimented the owners of the animals on the auction block, and greeted the breeders, stressing how selection is the winning strategy for competing in the cattle breeding sector of the future. The bidding determined the top price reached by La Fattoria Riche-

lieu, a powerful son of Inverno out of Azzurro presented by Emilio Donati and purchased for 4,150 Euro by the Zattini Maria Luisa farm of Forli-Cesena. Worthy of note in this animal was his particularly high ADG index: 146. The second-highest price was taken by La Viola Romano, a muscular son of Mambo with a pedigree linebred to Ramses, bred in Ravenna by Gian Michele Graziani and purchased for 4,050 euro by Mario Roverelli from Forli-Cesena.

Thus ends another year of auctions at the Genetic Centre. It was a difficult year which, following the well-known health issues, saw for the first time the appearance of the standard 3 groups only on the occasion of these last winter auctions. But most of all – we must remember – the Centre’s activity was profoundly affected by the loss of Lucio, who left in legacy to the entire white breed world the indelible mark of his enormous human and professional qualities. The ANABIC is also about to tackle a new demanding year, which will be characterized by a restructuring of the genetic centre, with the same passion as always and with the hope that the coming auctions can take place in tranquillity, bringing breeders the necessary and well-deserved economic satisfaction.

Table No. 1 Romagnola

Collar No.	Name	Father	AI NS	BSI	Test ADG	Morph. Val. Pts	Breeder	Buyer	Price Euro
146	Richelieu	VU Inverno x Azzurro	IA	135,4	1.520	86,0	Donati Emilio	Zattini M. Luisa - FC	4.150
112	Robroy	VU Navaho x VU Imothep	IA	132,6	1.858	85,0	Giuliani Gianluca	CTA FC	3.600
131	Rudy	VU NewYork x Boy	IA	126,8	1.626	84,3	Pondini Luciana	Stoppa Ferdinando - FC	3.500
144	Rasmus	VU Navaho x Azzurro	IA	122,7	1.677	84,0	Giuliani Gianluca	Ceccarelli Emiliano - FC	3.600
142	Rocco	LV Mambo x LV Gino	IA	120,7	1.573	83,0	Az. La Viola	Del Grosso Sebastiano - BO	3.000
129	Romano	LV Mambo x LV Idone	IA	119,2	1.810	84,0	Az. Prato Tassinari	Roverelli Mario - FC	4.050
115	Rustico	VU NewYork x Deriso	IA	115,8	1.460	84,0	Verlicchi Dino e Figli	CTA FC	3.900
111	Rabal	Bandolero x Boy	IA	115,7	1.313	84,3	Ceccobao Alessandro - SI	Berni Claudio - FC	3.900
143	Rocky	F. Nadir x Giosuè	IA	115,6	1.419	83,0	Pilati Corrado	Cremonini Mario - BO	3.000
128	Rodeo	VU Manso x Eliseo	FN	106,3	1.321	82,0	Mascheri Marinello	Silvani Roberto - FC	3.000
130	Raggio	VU Ivanhoe x Indios	FN	101,4	1.890	83,0	Stoppa Renato	Sampaoli Giovanni - FC	3.100

# anabic



Associazione  
Nazionale  
Allevatori  
Bovini Italiani  
da Carne



## MORPHOLOGICAL EVALUATIONS AND OFFICIAL HERD-BOOK SHOWS



**MORPHOLOGY AT THE SERVICE OF SELECTION,  
TO PROMOTE HIGH-QUALITY, FUNCTIONAL,  
PRODUCTIVE, AND LONG-LIVED LIVESTOCK**

ANABIC • 06132 S.MARTINO IN COLLE • PERUGIA (ITALY) • TEL. 075.607.00.11 • FAX 075.607.598  
[www.anabic.it](http://www.anabic.it) • [anabic@anabic.it](mailto:anabic@anabic.it)

# UPDATES WORTHY OF FRAMING

## The series of updates for Experts for 2006 are now over

### THE "PRACTICE" MEETINGS

The autumn cycle of practical updates for AN-ABIC Experts was again particularly intense this year. The full schedule started on 27 August in Città di Castello, on the occasion of the Provincial Chianina Show, with the updating for judges. The event, which was a total success, offered participants the possibility to measure themselves in conditions exactly like real ones, with an audience present. Among the animals used for the judging meeting were many "stars" consecrated in the most important Chianina rings, such as, for example, Giancarlo Marcucci's Melinda di Moglie, and the Luchettis' Radiosa and Qualità. Under examination were the reasons given by the judges in commenting their classifications, which are an aspect of considerable technical, teaching, and promotional importance. The experts involved greatly appreciated the initiative and the courteous hospitality they received, for which we wish to express our sincere thanks to the Perugia Provincial Breeders' Association, represented by its president Luca Panichi and director, Dr. Marco Prepi, as well as to their staff.

The second meeting scheduled, which took place on 31 August in Castel delci, in the province of Pesaro-Urbino, involved the Marchigiana experts, who met at the "Bigotta" farm of brothers Vilmo and Alessandro Nuti. This grazing farm, which was started up around twenty years ago from a rather ordinary genetic base, has made significant progress using exclusively performance-tested bulls, used both in natural service and, more recently, through AI. The comparison among the older cows, the younger ones, and the replacement heifers, perfectly suitable for the evaluations and the experts' comparisons, highlighted the positive results of a scrupulous, methodical selection. The Nuti farm, like all the other farms hosting the update meetings, received a customized mating plan.

The following stage involved the Chianina experts, who met in Collevalenza di Todi (Perugia), at Giancarlo Marcucci's "di Moglie" farm, the

breed's Umbrian stronghold. This nucleus, in addition to having produced Nurso, a sire widely used in AI, has received prestigious awards with Melinda and Nocca, known to aficionados as the Grand and Reserve Champions of the Bastia 2006 National Show. The numerous heifers present on this farm, which has around forty dairy dams, were the subject of a particularly lively and exciting competition. The Association's sincere thanks go to the Marcucci family, who displayed their proverbial hospitality.

The site of the next meeting, on 10 October, was at Filippo and Gabriele Sbardella's Torrecchia Nuova farm, a historic breeding farm of the Maremmana breed, situated in the heart of the breeding area, at Cisterna di Latina. The groups of cows of various ages used for the evaluations were perfect for the comparisons and discussion for both the linear classes attributed, and the simulated show classifications. After the sumptuous lunch featuring the farm's products kindly offered by the owners, there was a pleasant tour through the pastures, where it was possible to appreciate the extremely high level of the herd, which includes numerous mothers of animals that have undergone performance tests at the Alberese centre. Among the many stand-outs, worthy of mention was the veteran Energia, a grand reserve champion of the national show of Allumiere and winner of the trophy named after Lucio Migni. No less interesting were the bulls, with stand-outs being Orso S., for his muscle development and rump proportions, and Primo S., a balanced animal of considerable typicity.

Just two days later, on 12 October, it was the Romagnola breed that met the experts, who got together at the Daga brothers' Mezzacà farm in Rocca S. Casciano (Forlì-Cesena). This farm has two nuclei: a more ordinary one, which was the starting base, and a group of animals purchased later on from some of the breed's best breeding farms.

This situation, which has determined a wide variability, especially with regard to the dimensions, proved optimal for the updating, and was particularly appreciated by the experts. Among



*Giuseppe Bramante farm, Rignano Garganico (Foggia)*

the most striking animals on the farm, worthy of note were Ville Unite Oz, the Senior Grand Champion of the last two National shows, and Primula delle Querce, who represented the Romagnola breed at the World Congress in Gubbio last year. For this meeting, we would like to warmly thank Miriam and Gianni Daga for their openness and hospitality, and Fabrizio Rabiti, national expert and controller of the hosting Provincial Breeders' Association, for choosing the groups of animals used for the meeting.

The last stage of the intense practical update tour focused, on 18 October, on the Podolica breed, for which the experts met at Giuseppe Bramante's farm in Rignano Garganico (Foggia). The animals provided on this farm, characterized by vast secular olive groves on the slopes of the Gargano, were perfect for our purposes, both for the analytical evaluation and for the discussion of the simulated show classifications. The lunch, served in the farm's lovely farmhouse, closed the meeting on an extremely pleasant note.

## THE "THEORY" MEETING

As is customary, around one month after the practical update meetings, the theory meeting was held on 21-23 November at the ANABIC offices. The event, which envisages the examination of the activity carried out each year by the experts and the specific critical points, also featured, as speakers, several university professors including Mariano Pauselli, Francesca Maria Sarti, and Maurizio Monaci of the University of Perugia, in addition to Roberto Mantovani of the Department of Agriculture of the University of Padua. The lesson topics ranged from farm management to the importance of morphological data for processing genetic indices, to the andrological evaluation of the sires and the selective s-

trategies for the improvement of the quality of the meat. Among the Association's officers there was, working with me, Andrea Quaglia, of the Herdbook office, who described the new Herdbook rules. The participating experts attended the proposed lessons with great interest, asking the speakers numerous questions, in what has by now become a fixed appointment at the end of each year. The last lesson scheduled, held by me, reported on the 2006 show year, which included national shows for all five breeds, dwelling on the technical contents expressed for the single breeds in the various events. At the end of the meeting, the plaques for the "experts of

the year", which have by now become a highlight of the event, were awarded, for 2006, to the following experts:

Marchigiana breed: Antonio Politano for the Benevento-Avellino zone

Chianina breed: "Massimo Guerrieri" plaque to Natale Carelli for the Viterbo-Rieti zone

Romagnola breed: Duilio Bondi for the Forli-Cesena zone

Maremmiana breed: Stefano Cortesi for the zone of Rome

Podolica breed: Vito Marcantonio for the zone of Potenza

In addition to these plaques, another one was awarded for the first time: for the Judge of the Year, named in memory of Lucio Migni. The plaque for the judge who stands out each year among all those who have worked in the rings of the national shows, was and will be an occasion for all of us to remember, with great affection, Lucio and his work.

The plaque was awarded, amidst warm applause, to Antonio Vagniluca, the Head of the ANABIC Genetic Centres, for his brilliant judgement on the occasion of the 2006 National Chianina Show in Bastia, an event that was unique for the emotional intensity of those days and very difficult for the concentration of any judge.

As side events to the lessons, the Advisory Committee of Herdbook Experts, a morphological evaluation training meeting for Inspectors, and a meeting for experts to be equipped with data capture devices were organized. The atmosphere of the meeting for the experts was extremely cordial and marked by a rich exchange of experiences among operators who, even if they work with different breeds in situations that are often even geographically far apart, have similar problems and share the same passion.

# anabio



**Associazione  
Nazionale  
Allevatori  
Bovini Italiani  
da Carne**

improvement,  
enhancement, and  
spread of the breeds

**MARCHIGIANA  
CHIANINA  
ROMAGNOLA  
MAREMMANA  
PODOLICA**

Italian Beef Cattle Breed Herd-book

Genetic centres for the station testing  
of bulls and cows

Morphological evaluations and  
official shows of the Herd-book

Press and information

Research and experimentation

Promotion abroad



by **Matteo Ridolfi**  
*Morphological Evaluations Office*

## “EXCELLENT” COWS: Let's get to know them

The cows conventionally called “Excellent” (“Ottimo”) are those that receive a score of 90 points or higher in their morphological examination. Morphology is an important element in cattle breeding, but alongside the aesthetic aspect, which is indisputably satisfying for aficionados, it is necessary to consider primarily the functional aspects, connected with the production policy, locomotor functionality, and longevity. The scientific world has been devoting itself for some time to these aspects in order to provide objective selection tools for breeders, whose herds must necessarily produce income. Morphologically valid livestock can give the breeder one more tool in economic terms, in addition to the satisfaction... “You can't live on bread alone!” The list of animals that have stood out for their correctness is presented in Taurus broken down by breed and province. Alongside the cows known to aficionados for having already made a name for themselves in the most important arenas, there are other, less well known, ones who are waiting to be adequately enhanced. These notes are meant to give the proper prominence to all, highlighting what is perhaps the most satisfying aspect of the slow and often silent work of the breeders: the creation of a beautiful cow.

### MARCHIGIANA BREED (see Table 1)

There are a total of 18 cows of the Marchigiana breed classified as Excellent, all still present on their respective farms, and scattered around in 13 groups in 7 provinces of the regions of Marche, Abruzzo, and Sicily. Surprisingly, it is precisely a farm of the latter region, the Torrazza farm of Termini Imerese, in the province of Palermo, that can boast the highest number of Excellent cows within the framework of the whole breed: 4. The bull with the highest number of offspring classified as Excellent for the Marchigiana breed also belongs to the same farm; this is Didone, son of Nettuno out of Atomo, used in natural servicing. In second place, in this special classification, made up of 13 fathers, is the great Mirino, with 2 daughters. Following, with one daughter each, are Atomo, Belindo, Bilio, Birbo, Cefalo, Daino, Damasco, Dambo, Dolce, Erode, Erro, Feno, and Nettuno. The province with the highest number of Excellent cows is Macerata, with 6 cows on 5 farms, followed by Palermo, Pesaro-Urbino (3 cows on 2 farms), Ancona (2 cows on 2 farms), and Ascoli Piceno, Chieti

and Pescara, with one cow each. Scoring the highest in the Marchigiana “jet set”, with 92 points, is Liberia, the beautiful Damasco of the Fratelli Mei Carni farm, whom many will remember as the female grand champion of the 2005 National Show. The second highest score, in descending order, 91 points, belongs to Moretta, a Birbo born on the same farm and today owned by Livio Mecatili of Ascoli, a cow that boasts an important show past and holds, among the Excellent cows, the best Cow Selection Index – 118.4 – while the average CSI for the cows considered is 105.2. Many of the 18 Marchigiana “beauties” can boast “heavy” prize collections. In addition to Liberia and Moretta, we would like to mention Fava from Macerata, the Nettuno of Marco Mei's Mei farm, multi-winner of the National, Nemia, the well-known Erode out of Ermanna belonging to breeder Gaetano Ercoli, and Italia, the Daino of the F.lli Mei Carni farm. On the other hand, from Ancona comes Festosa, Piero Smagiassi's Dolce, who, in addition to being the Senior Female Champion of the 2003 National, is also the mother of numerous tested bulls. Another bull mother is Erica from Pescara, a Belindo out of Erro bred by Renato Ciarcelluti, of particular interest for her open pedigree.

### CHIANINA BREED (see Table2)

It is the Chianina that can boast, among all the breeds, the highest number of Excellent cows, with 78 scattered among 27 farms of 9 provinces of the regions of Tuscany, Umbria, Latium, and Emilia Romagna. The latter region, an outpost of the Chianina breed, boasts “Infima” (“lowly” in name only!), a daughter of Fagiano scoring 90 points, belonging to Umberto Bigi's Reggiano “Chianina di Canossa” farm. The region with the highest number of Excellent cows is Umbria, more precisely the province of Perugia, with 39 cows on 6 farms. Next comes Livorno (Leghorn), with 13 cows on 8 farms; other locations of note are Siena and Florence, with 6 Excellent cows each, followed by Rieti and Pisa with 5 animals, then Arezzo with 2 and, lastly, Reggio Emilia and Terni with one each. The hard-to-beat record of 20 Excellent cows on a single farm belongs to the farm of Luchetti Basilio and Claudio in Collazzone (Perugia). Among these, most of whom have been seen in show rings, worthy of note are Mina, the Giunone twice National Champion, the veteran Ester, a great “eternal second” on so

many occasions, Nara, a Fabio who has stood out since she was a heifer in the hottest rings, Qualità, an Oliver out of Pergo who was Junior Champion at Bastia 2006, and many others. Albeit with lower numbers, there is a group of very competitive farms with 5 Excellent cows each, including Gian Raffaele Pittalis's farm in Rieti, whose lovely dams were used for the filming of the video of the World Congress in Gubbio; Fosco and Mirko Mecherini's "dei Melograni" farm in Livorno, home to the great Isola, as well as to Dorina, Innata, Nilla, and numerous other female champions; and last but not least, Danilo Migni's farm in Perugia, a prestigious pool of cows of great genetic substance. Owners of 4 Excellent cows each are the Fabbrini brothers' farm "il Chiostro" in Siena, the birthplace of Dazzo, and Giancarlo Marcucci's "di Moglie" farm in Perugia, known both as the birthplace of Nurso and for its brilliant results in show arenas. Following with 3 Excellent cows each are Silvia Baroncelli's "il Colle" farm in Florence, of which Giostra is the founder, and Pietro Paoletti's "di Maria Bianca" farm in Pisa, which has produced Lio. These two groups precede Giovanni Pucci's "di Pergo" farm in Arezzo, with 2 titled Excellent cows: Gedda and Rarità. Numerous other breeders currently appear on the chart with just one "Excellent" cow, but they surely have tomorrow's champions in their nursery, such as, for example, the Giannellini brothers' "di Polledraia" farm, well known as Mandrillo's birthplace. There are 3 cows with the highest scores among the top models, all Perugian and classified with 92 points. These are Giancarlo Marcucci's Melinda di Moglie, the well-known champion of the 2006 National and breed symbol at the World Congress, Nara, the Luchettis' Fabio, and Luna della Favorita, an Ammiraglio out of Esco belonging to Danilo Migni. They are followed by 14 cows with scores of 91 points, among which are numerous "stars" admired in the liveliest rings of recent years. Just to mention a few, we can start with Genica, the evergreen 17-year-old Urpino from the Pittalis farm, as well as the Luchettis' Mina, Ester, Mazza, Oata, and Qualità. No less impressive are Nocca di Moglie, the Grand Reserve Dazzo of the 2006 National owned by Giancarlo Marcucci, Ida della Favorita, Danilo Migni's Eugenio, Nilla Melograni, Fosco Mecherini's multi-champion Germano and, also from Livorno, Mara del Boccaccio, Enzo Guerrieri's Dazzo who was champion at Bibbona. The Florentine cows are also very fine, such as Oliva, the "del Colle" Lento who was junior champion at Bastia 2003, and Fadia, the Chiaris' multi-titled Eugenio, the winner of two editions of the National Show. This rich collection of extraordinary individuals includes numerous mothers of bulls tested at the genetic centre. There are 45 fathers of the excellent cows, and the leader among them is Dazzo, with 7 daughters, followed by the

evergreen Eugenio with 4, with Lio, Fabio, and Moriero following with 3 daughters each. Last come Fanfullo, Iovoso, Faldo, Falto, Filiberto, Fondo, Mandrillo, and Mammut del Chiostro with 2 daughters each. The average Cow Selection Index for the 78 excellent cows is 102.5. The cow with the highest CSI is Giancarlo Marcucci's Ramona di Moglie, the result of an "ad hoc" mating (Lio x Mandrillo) which shot her index up to 131.5. Following close behind are two cows who are both out of Dazzo: these are Rarità di Pergo from Arezzo, Danilo Pucci's Mandrillo, with a CSI of 126.7, and Rumba di Polledraia, daughter of Lio and the well-known Lauretta di Polledraia, owned by Silvia Baroncelli, who boasts a CSI of 123.6.

## ROMAGNOLA BREED

(see Table 3)

There are a total of 19 Excellent cows for the Romagnola breed, with 10 in the province of Ravenna and 9 in the province of Forlì, spread out over 13 farms. The farm with the highest number of Excellent cows of this breed is Gianluca Giuliani's "Ville Unite" in Ravenna, with cows that include – in addition to Ira and Ninfa, the daughters of V.U. Eolo and V.U. Ivanhoe, respectively, and Senior Grand Champions of the past two editions of the National – Luna, the Bandlero who was the Grand Senior Reserve Champion of the 2002 National. In second place we find the Daga brothers' Forlì "Mezza Cà" farm which, with 3 Excellent cows, has by now finished the initial "new entry" phase and become a certainty. In addition to V.U. Mariposa, daughter of Imbattibile and V.U. Letizia, a 2nd-generation Excellent from the family of Cesarina, the young "star" of the farm is Primula delle Querce, an Ivanhoe from the family of Faina who, in addition to already having shone brightly in the most important rings, such as that of the World Congress in Gubbio, represents the 4th generation judged excellent in her female line. All the other farms present one cow apiece, and among them there are interesting individuals, such as La Viola Ilaria, Senior Female Champion of the 2004 National and Grand Reserve in 2006, as well as being the breed representative at the last World Congress. This daughter of Pupo from Gian Michele Graziani's La Viola farm has also produced offspring tested at the Genetic Centre. Other show cows accustomed to the ring are Isabella Babinì, the Calore of the Rivalona farm in Ravenna, formerly the National Junior Champion at Reggio Emilia 2000; Amanda, the 2nd-generation Excellent Azzurro of the Donati farm in Lugo (Ravenna), Champion of the 2003 National and mother of tested bulls; Ravenna's Monica, a VU Eolo owned by Simone Pozzi with all the characteristics necessary for making a great contribution to the breed. The veteran Dalila, Giuliani's Buono, also has an honourable

show record, in addition to being the mother of Ville Unite Neff, a bull widely used in AI. Among the younger cows, worthy of note are Orchidea, Verlicchi's Bandolero, another representative of the family of Faina and Junior Champion of the 2003 National. With 91 points, her mother, Cleopatra, daughter of Azzurro, is currently the dam with the highest score for the breed, and is winding up her career at Pietro Tassinari's "Prato" farm in Forlì. The last to be mentioned in this impressive group is Fardini Quieta, the lovely V.U. Naif owned by Marinello Mascheri, outgoing Junior Champion of the last Reggio National. The group of fathers of Excellent cows is quite large. The leader is Azzurro, with 4 daughters, followed by Emiro, V.U. Eolo, and V.U. Ivanhoe with 2 daughters each. As for the genetic merit of these cows, the average CSI is a respectable 108.8. The highest CSI belongs to Ville Unite Ira, daughter of Vu Eolo, with 120.2, followed by Orchidea delle Querce, Verlicchi's Bandolero, with CSI 119.8, and Ville Unite Luna, Giuliani's Bandolero of the family of Sofia, with a CSI of 116.6, just to mention the top three. The names of the farms making up the list are, as can be seen, very prestigious, including many well-known names that participate regularly in shows. One last note: the absence of cows classified as Excellent in the province of Bologna is quite surprising.

## MAREMMANA BREED

(see Table 4)

There is no lack of Excellent cows for the Maremmana breed which, in spite of its relatively limited numbers, boasts a total of 40, of which 35 belong to 7 farms of the province of Rome and 5 are in Latina, concentrated at the Mascetti Sbardella farm of Cisterna. A consideration may be made for the provinces of Grosseto and Viterbo, absent on this list in spite of the fact that they have farms of consolidated tradition and great prestige. The leader of this special classification is the SPQR- Comune di Roma farm, with 14 Excellent cows, followed by the Castelporziano estate with 11, the Torrecchia Nuova Mascetti Sbardella farm in Latina with 5, the Agricultural University of Tolfa and the Istituto Sperimentale per la Zootecnia of Tormancina with 3 cows each, the Giulio Pierangelini farm with 2, and the Torre in Pietra S. Angelo and San Pietro farms, with one cow each. Also significant is the number of cows – 14 – with a score higher than 90 points. The cow with the best evaluation not only within the Maremmana breed, but of all five breeds, is Megera Castelporziano, a daughter of the great Rimini of the Presidential Estate, with a score of 94 points. This cow is in excellent company, because on the same estate there are 3 other cows judged with 93 points. These are Nesea, Nisa, and Opa, all with the same score, the first being a daughter of Iacco and the

other two daughters of Frontone. There are 2 cows with 92 points: the no. 408 of the Pierangelini farm, and Ostera, a Fidio of the Castelporziano estate. The 7 cows classified with 91 points are all in the province of Rome and are on 5 different farms. Two of these are daughters of the bull VT 101413 of the SPQR-Comune di Roma farm. Another is the cow 3/03 of the Agricultural University of Tolfa. On the other hand, the San Pietro farm is the owner of Oliva, daughter of Antracite, while another cow, marked CV, belongs to the Istituto Sperimentale of Tormancina. The last 2, Numesia and Onfale, strengthen the already numerous group of "Excellents" of Castelporziano and are the daughters of Fidio and Iacco, respectively. There are 16 cows with CSIs higher than 100. 13 of these are in the province of Rome, on the Torre in Pietra S. Angelo farm, at the Istituto Sperimentale of Tormancina, and on the Castelporziano estate; the latter has 11 of them, also because of the congruous number of animals undergoing performance tests at the Alberese Centre. Among the latter it is Nisa Castelporziano that has the highest CSI, with 111.4. The remaining 3 Excellent cows with high CSIs are in Cisterna di Latina, on the Mascetti Sbardella farm, and among all of them a stand-out is Energia, the veteran daughter of Fidone and Senior Reserve Champion and winner of the Migni trophy at the last Allumiere National, whose CSI is 123.8.

## PODOLICA BREED

(see Table 5)

The 15 Excellent cows of the Podolica breed are for the most part Calabrian, and are all daughters of farm bulls. The only cow of Basilicata is Valentina, a daughter of Giorgio owned by breeder Giovanni Pafunti of Potenza. The 14 Calabrian cows are scattered among 10 farms in the province of Cosenza. The group containing the highest number is Francesco Martucci's farm, with 3, followed by those of Ugo Rittacco and the Francesco "Ciccio" Caruso farm, with 2 Excellent cows each. The best evaluation belongs to Primavera, a daughter of Spagnolo of the Martucci farm, classified with 91 points. The highest CSI, 101.2 points, is that of Brandoria, daughter of CS 100805 bred by Rosario Coppola. With the images of the beautiful 2006 Camigliatello National still impressed in our minds thanks to the numerous top level cows, the absence of well-known major farms in Calabria, Basilicata, and Apulia from the group of morphologically "elite" cows is quite puzzling. Our sincerest congratulations go to all the breeders of the Excellent cows. Animals of this calibre represent the cream of their breeds, as well as a spendable image of functional beauty that helps promote the good work of their breeders, for whom such brilliant results are certainly fully deserved!

Vacche ottimo - Tab. 1

Individual	Birth date	Father	Mother	Maternal Grandfather	Points	Qualifications				Morph. Ind.	CSI	Farm	
						Breed Traits	Musc.	Dim.	Legs & Struc.				
51AN130464	29/05/1986	Dolce	Disputa	51AN100782	90	M	O	O	O	99	112	106 Smargiassi Piero	AN
51CH107476	10/10/1980	Erro	Euclide	51MC106007	90	O	O	M	M	91	102	97 Di Paolo Alessio	CH
51MC113269	25/03/1987	Atomo	Desina	51MC014097	90	O	O	M	M	99	103	101 Capitani Fabio	AN
51MC134560	20/01/1986	Nettuno	Bira	51PE102483	90	M	O	O	M	94	99	96 Az. Mei Di Mei Marco & C.	MC
51MC135472	20/08/1986	Mirino	Bocca	51AP106591	90	M	O	M	M	108	100	104 Vissani Valentino	MC
51MC136387	27/12/1986	Mirino	Luisa	51AN007873	90	M	O	O	M	115	111	113 Carnevali Donatella	MC
51PE114025	10/04/1985	Belindo	Nita	51AN107104	90	O	O	M	M	109	101	105 Ciarcelluti Renato	PE
51PS120204	17/07/1987	Cefalo	Cerva	51AN119099	90	M	O	M	M	108	105	107 Mattei Mauro	PU
IT013MC030C020	16/07/1988	Daino	Numa	51AP106591	90	O	O	M	M	113	97	105 F.lli Mei Carni Di Mei A. & C.	MC
IT033MC068C032	18/11/1988	Feno	Festa	51AN123944	90	M	O	O	B	109	105	107 Pasquini Gino	PS
IT041990000320	02/11/2004	Bilio	Olga	IT054MC008B008	90	M	M	O	M	120	104	112 Pasquini Gino	PS
IT0430000003316	07/09/1989	Damasco	Firma	51PE105642	92	O	O	O	O	108	104	106 F.lli Mei Carni Di Mei A. & C.	MC
IT0430000003708	30/01/2001	Erode	Ermanna	51AN123946	90	O	O	M	M	109	106	107 F.lli Erooli Soc. Agr.	MC
IT0430000003817	25/09/2000	Birbo	Fina	51MC128587	91	O	O	O	M	124	113	118 Mercatilli Livio	AP
IT0820000002638	01/03/1989	Didone	Doriana	51MC124335	90	O	O	M	M	104	94	0 Az. Agr. Torrazza	PA
IT0825100000544	01/06/1989	Dambo	Cedra	51MC118034	90	M	O	M	M	97	101	99 Az. Agr. Torrazza	PA
IT082510010989	15/05/2000	Didone	Crina	51MC124943	90	O	O	M	B	106	92	0 Az. Agr. Torrazza	PA
IT082510010995	30/05/2000	Didone	Duna	51PE105642	90	O	O	M	B	106	97	102 Az. Agr. Torrazza	PA

## Marchigiana

Vacche ottimo - Tab. 2

Individual	Birth date	Father	Mother	Maternal Grandfather	Points		Breed Traits	Qualifications			Morph. Ind.	CSI	Farm		
					Legs & Struc.	Dim.		Musc.							
52AR118390	01/05/1997	52S1122481	52AR112306	52S1117048	Fantullo	90	M	O	O	M	117	105	111	Az. Agr. Pucci Giovanni	
52L1104000	07/05/1991	52PG116382	52S1120019	52S105471	Zuvello	90	O	O	M		102	102	102	102	Mecherini Fosco
52L1105427	05/01/1994	52S1117048	52L1102298	52S105270	Zarro	90	O	O	M	B	112	120	116	116	Guerrieri Enzo
52L1105677	01/06/1994	52S1122960	52L1103748	52S107465	Allasio	90	M	O	M	O	112	107	109	Az. Agr. Cason Vecchio	
52L1105751	04/07/1994	52S1123365	52L1103671	52PS116382	Dolco	90	M	O	M	O	103	104	104	104	Minnozzi Stefano
52L1107431	27/05/1997	52S1129799	52L1100360	52L1001623	Torquato	90	O	O	M	M	112	104	108	108	Mecherini Fosco
52PG124396	11/05/1990	52S1020702	52PG106201	52S1005329	Maulo	91	O	O	M	O	97	97	97	97	Pittalis Gianraffaele
52PG130847	29/07/1992	52L1102459	52PG106201	52S1005329	Maulo	90	O	O	M	M	107	102	105	105	Pittalis Gianraffaele
52PG136970	14/12/1994	52S1117048	52PG116568	52S1019136	Tempo	90	O	O	M	M	107	110	108	108	Migni Danilo
52PG137389	26/03/1995	52PG129854	52PG121447	52AR102230	Ario	90	M	O	M		99	103	101	101	Conestabile Della Staffa
52PG138235	17/04/1995	52S1122960	52PG108879	52AR006252	Tano	90	M	O	M	O	102	101	101	101	Pittalis Gianraffaele
52PG138334	06/05/1995	52PG126962	52S1121111	52S1111096	Cinello	91	O	O	O		95	105	100	100	Luchetti Basilio E Claudio
52PG142991	26/03/1997	52P1106822	52S1121111	52S1111096	Cinello	90	O	O	M		92	103	98	98	Luchetti Basilio E Claudio
52PG146399	26/10/1998	52L1102459	52PG124862	52S13115	Gegio	91	O	O	M	M	114	109	112	109	Migni Danilo
52P1103829	30/12/1987	52L1101383	52P1003445	52P1002381	Pugno	90	M	O	O		102	96	99	99	Pittalis Gianraffaele
52P1108962	21/03/1997	52AR111949	52P107506	52PG122371	Flutto	90	O	O	M	M	104	105	0	0	Tecnomeccanica Srl
52S1126838	11/03/1993	52S1116757	52S105839	52S1010926	Pallone	90	O	O	M	M	110	97	103	Az. Agr. Pecci Lido	
52S1131786	22/07/1995	52S1127043	52S124073	52S111096	Cinello	90	O	O	M		108	113	110	Az. Agr. Fabbini F.lli S. S.	
52S1131960	20/08/1995	52S1117089	52S119040	52S1112914	Dottore	90	O	O	M		117	103	110	Az. Agr. Fabbini F.lli S. S.	
52S1133981	10/07/1996	52L1102459	52S113517	52S1016485	Talurno	91	O	O	M	O	114	110	112	Le Querce Dei Chiani	
52S1134205	24/07/1996	52S1117089	52S125324	52S1113232	Dicimoso	90	O	O	M		109	93	101	Az. Agr. Fabbini F.lli S. S.	
52S1135730	27/03/1997	52S1126771	52S125473	52S1115912	Enodio	90	M	O	M	O	110	103	106	Az. Agr. Costagli Maura	
52S1135990	28/04/1997	52S1129233	52S125473	52L1102459	Eugenio	90	O	O	M		125	101	113	Luchetti Basilio E Claudio	
IT001L1022C007	22/02/1998	52S1129250	52TR111511	52S105352	Ziro	90	M	O	M		100	102	101	Mecherini Fosco	
IT013RE192C003	02/02/1998	52S1133045	52P107811	52S1119265	Giustino	90	M	O	M		99	107	103	Allev. Chianina Di Canossa	
IT019P1010C013	12/09/1998	52L1106808	52P107811	52S121455	Iapino	90	O	M	M		103	102	103	Agati Fabio	
IT048000213733	03/11/2002	IT049000100546	52L107738	52AR112171	Dono	91	O	M	O		103	105	104	Baroncelli Silvia	
IT048990001505	30/07/2003	IT052000204925	52S132684	52S123939	Buatto	90	O	M	M		117	111	114	Cendali Francesco	
IT048990004840	04/07/2004	IT052000202203	IT054000075601	IT03S1025C031	Ileo	90	M	O	M		126	109	117	Baroncelli Silvia	
IT048990007066	20/03/2005	IT052000451568	IT048000100947	52PG144685	Giorno Della Favorita	90	O	M	M		114	125	119	Benedetti Manuele	
IT049000100966	29/08/2000	52S1129799	52L104581	52L103385	Gedfo	91	M	O	O		114	101	107	Guerrieri Enzo	
IT049000101131	05/01/2001	52S1136231	IT001L1022C009	52S129250	Diolo	91	O	O	M		109	99	104	Mecherini Fosco	
IT049000200189	18/07/1999	52S1129799	52L1106164	52S122960	Iovoso	90	M	O	M		116	118	117	Giannelini Edilio	
IT049990000131	24/04/2003	IT052000204925	IT049000200172	52S1131411	Elino	90	M	O	M		130	116	123	Favilli Orlando	
IT049990002231	03/04/2005	IT050000200158	IT049000200189	52S129799	Dazzo	90	O	M	M		127	120	124	Baroncelli Silvia	
IT050000002330	02/07/2001	52S1131411	52P107192	52S118103	Ferotto	90	B	O	O		113	102	108	Ciconofri Piero	
IT050000200172	11/02/2000	52P1108401	52P107792	52PG123060	Ghiotto Della Favorita	90	O	M	M		119	121	120	Paolelli Mario	
IT050000200186	15/07/2000	52P108401	52P107801	52PG123060	Ghiotto Della Favorita	90	M	O	M		113	106	110	Paolelli Mario	
IT050000200257	20/06/2000	IT050000200168	52P106364	52PG123060	Chiostro Della Favorita	90	M	O	M		114	106	110	Mecherini Fosco	

# Chianina

Vacche ottimo - Tab. 2

Individual	Birth date	Father	Mother	Maternal Grandfather	Points	Qualifications				Morph. Ind.	CSI	Farm	
						Breed Traits	Musc.	Dim.	Legs & Struc.				
IT050000203753	18/04/2003	52S1137478	Piera Di Maria Bianca	Getto	IT050000200188	Milina Di Maria Bianca	52P1108401	Filberto	90 O M O M	136	106	121 Paciotti Mario	PI
IT051990010609	18/04/2005	IT049000201574	Ranila Di Pergo	Mandrillo Di Polledraia	IT051000024403	Olimpia Di Pergo	52S129799	Dazzo	90 O O M M	141	113	127 Az. Agr. Pucci Giovanni	AR
IT052000045197	02/03/1999	52L1106167	Liana	Eman	52S1131894	Ecora	52PG126129	icanus-et	90 O O M M	115	109	112 Luchetti Basilio E Claudio	PG
IT052000045080	11/10/2000	52S1129799	Mazza	Dazzo	52S1136807	Germa	52S121155	Grido	91 O O O M	119	104	112 Luchetti Basilio E Claudio	PG
IT052990001749	17/07/2003	IT052000702337	Pizza	Mito	52S1135513	Geetia	52S1129799	Dazzo	90 M O O O	119	112	116 Az. Agr. Pecci Lido	SI
IT052990004359	31/12/2003	52S1116757	Postumia Del Chiestro	Faldo	52S1136375	Giada Del Chiestro	52S117089	Falfo Del Chiestro	91 O O O O	115	115	115 Az. Agr. Fabbini F.lli S. S.	SI
IT054000020128	12/09/1999	52S1107487	Luna Della Favorita	Ammiraglio	52PG131103	Benny Della Favorita	52PG116370	Esco	92 O O O O	106	110	108 Migni Danilo	PG
IT054000021066	20/07/1999	52S1129799	Ladisa	Dazzo	52L1107223	Fiudisca Del Maccetti	52AR112171	Dono	90 M O O M	122	107	115 Luchetti Basilio E Claudio	PG
IT054000041233	06/04/2001	52S1135954	Nabira Dei Colli	Gorino	52PG144758	Gemma	52P1107593	Diro	90 M O O M	105	115	110 Fedeli Francesco E Andrea	PG
IT054000043090	20/04/2000	52L1107488	Mina	Giunone	52PG134641	Dalina	52S1122481	Iero	91 O O O O	117	104	111 Luchetti Basilio E Claudio	PG
IT054000049058	27/06/2000	IT052PG0208C010	Melinda Di Moglie	Isacco Di Moglie	52PG135326	Dora	52S1122481	Iero	92 O O M O	115	107	111 Marcucci Giancarlo	PG
IT054000063695	13/08/2001	52S1129799	Nocca Di Moglie	Dazzo	IT054000010746	Lamba Di Moglie	52S1130280	Drea	91 O O O O	124	111	117 Marcucci Giancarlo	PG
IT054000075753	23/02/2001	52PG140810	Nara	Fabio	52PG144870	Gana	52PG134699	Dominio	92 O O O O	111	116	113 Luchetti Basilio E Claudio	PG
IT054000075771	05/06/2001	IT033S1025C031	Nadlia	Ifso	52PG139710	Enona	52PG133280	Corvo	90 O O O M	115	112	114 Luchetti Basilio E Claudio	PG
IT054000080955	30/04/2002	52S1134440	Oata	Fondo Del Chiestro	52PG138759	Emiliana	52P1106822	Cosimo Di Maria Bianca	91 M O O O	107	111	109 Luchetti Basilio E Claudio	PG
IT054000080970	04/05/2002	52S1134440	Obala	Fondo Del Chiestro	IT054000021110	Lovia	52L1102459	Eugenio	90 O O O M	111	112	111 Luchetti Basilio E Claudio	PG
IT054000085761	07/12/2002	IT054000043278	Olimpia	Moniero	52PG145230	Ialia	52P1106822	Cosimo Di Maria Bianca	90 O M O O	119	105	112 Luchetti Basilio E Claudio	PG
IT054000086375	02/05/2003	52PG140810	Penny	Fabio	IT054000021110	Lovia	52L1102459	Eugenio	90 O O O B	115	117	116 Luchetti Basilio E Claudio	PG
IT054000110423	13/02/2003	IT049000201574	Panara	Mandrillo Di Polledraia	52PG144397	Ganza	52L1105582	Discobolo	90 O O M M	128	111	120 Giulivi Felice	PG
IT054990003582	22/02/2004	IT0520000453056	Quintana Della Favorita	Nesto	52PG136970	Draga Della Favorita	52S117048	Fantullo	90 O O O O	109	104	106 Migni Danilo	PG
IT054990018131	17/10/2003	52S1129799	Petra	Dazzo	52S1127966	Cheta	52S118083	Falomo	90 O M M M	119	105	112 Luchetti Basilio E Claudio	PG
IT054990018137	15/11/2003	52PG140810	Perla	Fabio	52PG138520	Ebola Della Favorita	52S117048	Fantullo	90 M O M O	116	110	113 Luchetti Basilio E Claudio	PG
IT054990018161	02/02/2004	IT054000043278	Quaga	Moniero	52PG144585	Gerita	52PG136784	Euripo	90 O M O M	121	103	112 Luchetti Basilio E Claudio	PG
IT054990018166	19/02/2004	IT033S1025C031	Quama	Ifso	IT0520000451197	Liana	52L1106167	Eman	90 M O M M	119	106	112 Luchetti Basilio E Claudio	PG
IT054990018178	16/03/2004	52L1102459	Quercia	Eugenio	IT054000075753	Nara	52PG140810	Fabio	90 O O O M	114	110	112 Luchetti Basilio E Claudio	PG
IT054990023624	06/04/2004	IT0520000202215	Quaca Dei Colli	Luccio Del Chiestro	52PG144758	Gemma	52P1107593	Diro	90 O O O M	117	118	117 Fedeli Francesco E Andrea	PG
IT054990031900	18/12/2004	IT0540000063694	Quirna Di Moglie	Nurso Di Moglie	IT054000063695	Nocca Di Moglie	52S129799	Dazzo	90 O O M M	131	114	122 Marcucci Giancarlo	PG
IT054990031904	13/04/2005	IT050000200158	Ramona Di Moglie	Lo Di Maria Bianca	IT054000086186	Orana Di Moglie	IT049000201574	Mandrillo Di Polledraia	90 O M M M	138	125	132 Marcucci Giancarlo	PG
IT054990033665	28/07/2005	IT050000200158	Ranya Della Favorita	Lo Di Maria Bianca	IT054000081282	Opera Della Favorita	52S1107487	Ammiraglio	90 O M M M	119	118	118 Migni Danilo	PG
IT054990037888	27/10/2004	IT051000024402	Qualia'	Oliver Di Pergo	52S1135107	Gilda	52PG116370	Esco	91 O O O O	116	123	120 Luchetti Basilio E Claudio	PG
IT054990037903	14/12/2004	IT054000043278	Quaglia	Moniero	52PG145230	Ialia	52P1106822	Cosimo Di Maria Bianca	90 O O M M	119	112	116 Luchetti Basilio E Claudio	PG
IT055000023314	30/08/2003	52PG144441	Pomposella	Giove Della Favorita	IT055000010711	Nostrana	52AR112331	Dardo Di Fontarocco	91 O O O M	107	121	114 Fabbretti Lorenzo	TR
IT057000035520	11/04/2001	IT017L1032C007	Nana'	Imperatore Dei Maccetti	52P1103829	Divina	52L1101383	Bertoldo	90 O O O M	106	99	103 Pitalis Gianraffaele	RI

## Chianina

Individual	Birth date	Father	Mother	Maternal Grandfather	Points	Qualifications				Morph. Ind.	CSI	Farm
						Breed Traits	Musc.	Dim.	Legs & Struc.			
54FO124900	15/08/1992	Azzurro	Miranda	54FO008325	90	O	O	M	M	99	99	99 Az. Agr. Mariani S.s.
54RA107571	20/11/1991	Azzurro	Quatra	54RA005724	90	M	O	M	O	97	104	100 Donati Emilio
54RA108730	01/12/1993	Azzurro	Faronia	54FO113922	91	O	O	M	M	102	107	104 Az. Agr. Prato di Tassinari
54RA109321	12/10/1994	Buono	Ville Unite Aida	54RA104707	90	O	O	M	M	99	110	105 Giuliani Gianluca
IT014RA121C049	04/08/1998	Pupo	Bionda	54BO107301	90	M	O	M	M	114	117	116 La Viola Srl
IT014RA153C016	15/10/1998	Ville Unite Eolo	Clara	54FO117910	90	O	O	M	M	129	111	120 Giuliani Gianluca
IT016RA057C011	12/09/1998	Calore	Donatella	54FO123289	90	M	O	M	O	93	98	95 Az. Agr. Rivalona
IT03933339026	16/05/2002	Bandolero	Cleopatra	54FO117910	90	O	O	M	M	117	123	120 Verlicchi Dino E Figli
IT039333340356	21/06/2003	Ville Unite Ivanhoe	Molra	54RA107863	90	O	O	M	M	101	120	111 Az. agr. Mezza Ca'-daga A. E. F.
IT03966667263	20/04/1999	Azzurro	Cesarina li	54RA104707	90	O	O	B	B	101	97	99 Az. agr. Daga F.lli Ss.-Daga G.
IT03966667726	23/08/1999	Bandolero	Avana	54PS001696	90	O	O	B	B	123	110	117 Giuliani Gianluca
IT03966669278	01/03/2000	Ville Unite Eolo	Bambolina	54RA106651	90	O	O	M	M	120	109	115 Az. agricola Pozzi Simone
IT03966669849	19/07/2000	Ville Unite Guru B015	Cortina	54FO117910	90	O	O	M	M	114	101	108 Giuliani Gianluca
IT03966669855	15/12/2000	V. Unite Imbattibile	Bianca	54FO112264	90	O	O	M	M	107	107	107 Az. agr. Daga F.lli Ss.-Daga G.
IT03966671872	27/05/2001	Ville Unite Ivanhoe	Ville Unite Fiaba	54RA107863	90	O	O	M	M	104	115	109 Giuliani Gianluca
IT040000008335	15/09/2001	Gigante	Doria	54RA108054	90	O	O	M	M	101	123	112 Scozzoli Renzo
IT040500006141	19/09/1999	Emiro	Delia	54FO11652	90	O	O	M	M	110	113	112 Mascheri Olivano E Nello
IT040990006840	24/06/2004	Ville Unite Naif	Fardini Iona	54RA109886	90	O	O	B	B	114	111	112 Mascheri Marinello & C.s.s.
IT050FO004C027	22/06/1998	Emiro	Bruk	54FO11652	90	M	O	M	M	110	108	109 Stoppa Renato & C. S. S.

## Romagnola

Vacche ottimo - Tab. 4

Individual	Birth date	Father	Mother	Maternal Grandfather	Points	Breed Traits			Qualifications			BSI	Morph. Ind.	CSI	Farm
						Legs & Struc.	Dim.	Musc.	Legs & Struc.	Dim.	Musc.				
55GR104313	26/02/1994	Acaceto Castelporziano	Debora	55GR101443	Argo	90	M	O	M	103	0	0	Torre In Pietra	S. Angelo	RM
55LT101405	23/09/1995	Fidone 6/89	Galaasia	55LT101281	Zacinto	90	O	O	M	124	0	0	Mascetti - Sbardella Snc		LT
55R106545	03/01/1994	04-feb 55R102826		617 55GR002897	Scudo	92	O	M	O	98	0	0	Pierangellini Giulio		RM
55R107122	04/03/1995	55 55R100817		219 55R1002250	Capocccione	90	O	M	M	0	0	0	Pierangellini Giulio		RM
55R107283	07/03/1995	Rimessone	28/88	55R101792	Barone 2/83	90	O	O	M	93	0	0	S.p.q.r. Comune Di Roma		RM
55R107294	21/01/1995	Lucifero	29/86	55VT1423	Sereno	91	O	M	O	93	0	0	S.p.q.r. Comune Di Roma		RM
55R107340	09/02/1995	Lucifero	21/92	55R102901	Rimessone	90	O	O	M	98	0	0	S.p.q.r. Comune Di Roma		RM
55R107352	06/02/1995	Lucifero	37/92	55R102935	34/87	90	O	O	M	99	0	0	S.p.q.r. Comune Di Roma		RM
55R107654	05/03/1996	Baccano 2	14/89 Emilia	55LT000221	Ussaro	90	O	O	M	110	0	0	Mascetti - Sbardella Snc		LT
55R107728	13/02/1996	55R102991	55R102991	giu-88 55R1002278	Ulisse	90	M	O	M	94	0	0	S.p.q.r. Comune Di Roma		RM
55R107737	19/02/1996	55R105002	4/92	55R101782	Barone 2/83	90	O	O	M	92	0	0	S.p.q.r. Comune Di Roma		RM
55R107767	30/01/1996	55R102988	55R102988	feb-88 55R1002278	Ulisse	91	O	O	M	95	0	0	S.p.q.r. Comune Di Roma		RM
55R108133	12/02/1997	Baccano 2	15/85	55VT1572	Lepanto	90	O	O	O	103	0	0	Tenuta Di Castelporziano		RM
55R108211	07/02/1997	Lucifero	33/94	55R103766	Ercole	92	O	O	M	99	0	0	S.p.q.r. Comune Di Roma		RM
IT058000111116	25/01/2000	Riminino 09/83	55R104123	mag-89 55R102329		94	O	M	O	103	0	0	Tenuta Di Castelporziano		RM
IT058000121349	11/02/2001	Iacco Castelporziano	55R107682	Febba 34/96 Castelporziano	Abillio 36/91	93	M	B	O	103	0	0	Tenuta Di Castelporziano		RM
IT058000121374	20/02/2001	Frontone	IT091RM402C063	Ipomea 14/98 Castelporziano	Riminino 09/93	93	M	O	M	111	0	0	Tenuta Di Castelporziano		RM
IT058000121376	02/03/2001	38/96 Fidlo	55R104507	55R102329		91	O	M	M	103	0	0	Tenuta Di Castelporziano		RM
IT058000129399	30/03/2002	Iacco Castelporziano	55R105721	mag-93 55VT101129	Baccano 2	90	O	O	M	106	0	0	Tenuta Di Castelporziano		RM
IT058000129400	05/02/2002	Iacco Castelporziano	55R105713	feb-93 55VT101129	Baccano 2	91	M	M	O	107	0	0	Tenuta Di Castelporziano		RM
IT058000129414	23/01/2002	Frontone	55R105377	55VT101129	Baccano 2	93	O	O	M	110	0	0	Tenuta Di Castelporziano		RM
IT058000129420	14/03/2002	38/96 Fidlo	55R108162	31/97 Castelporziano	Abillio 36/91	92	M	O	M	98	0	0	Tenuta Di Castelporziano		RM
IT058000129421	07/02/2002	38/96 Fidlo	IT091RM402C055	Iade 06/98 Castelporziano	Abillio 36/91	90	O	M	O	95	0	0	Tenuta Di Castelporziano		RM
IT058000134684	26/01/2003	38/96 Fidlo	IT091RM402C063	Ipomea 14/98 Castelporziano	Riminino 09/93	90	M	O	O	100	0	0	Tenuta Di Castelporziano		RM
IT058000300319	04/02/1999	2/97 Vichingo	55R105061	dic-92 55R103766	Ercole	90	M	O	M	94	0	0	S.p.q.r. Comune Di Roma		RM
IT058000300321	04/02/1999	Lucifero	55R105451	55R103766	Ercole	90	O	O	M	97	0	0	S.p.q.r. Comune Di Roma		RM
IT058000300366	22/02/1999	6/97	55R105063	55R102935	34/87	90	M	O	M	92	0	0	S.p.q.r. Comune Di Roma		RM
IT058000314612	19/01/2002	Antracite	55R105446	55R103766	Ercole	91	O	M	O	96	0	0	Az. Agr. San Pietro		RM
IT058000314693	14/02/2002	2/97 Vichingo	55R106948	55R102901	Rimessone	90	M	O	M	98	0	0	S.p.q.r. Comune Di Roma		RM
IT058000319100	19/03/2003	2/97 Vichingo	IT091RM058C054	55R102901		90	M	O	M	94	0	0	S.p.q.r. Comune Di Roma		RM
IT058000413230	16/02/2003	99/4	IT058000401988	55VT102022		90	O	O	M	0	0	0	Univ.agr.di Tolfa		RM
IT058000413233	16/02/2003	99/4	IT058000401988	55R103205	M1	90	O	M	M	94	0	0	Univ.agr.di Tolfa		RM
IT058000413242	15/03/2003	99/4	IT058000407531	01-gen 55VT102022		91	O	M	M	98	0	0	Univ.agr.di Tolfa		RM
IT058000616000	14/04/2001	Presidente Castelporziano	55R104944	55R102022		90	O	O	M	104	0	0	lst.sper.zootecnica		RM
IT058000634232	05/03/2002	55R107590	IT058RM001B093	55VT101712	92/2	90	O	O	M	0	0	0	lst.sper.zootecnica		RM
IT058000634293	29/03/2002	55R107590	55R104617	55R103036		91	O	M	O	0	0	0	lst.sper.zootecnica		RM
IT059000082178	12/02/2001	Indio	55LT101428	55R104129	Fidone 6/89	90	O	O	M	117	0	0	Mascetti - Sbardella Snc		LT
IT059000411816	08/03/2004	Mirto	IT059000082183	55LT101486	Ginepro	90	O	O	M	95	0	0	Mascetti - Sbardella Snc		LT
IT059000411820	10/03/2004	Mirto	55LT101407	55R104129	Fidone 6/89	90	O	O	M	96	0	0	Mascetti - Sbardella Snc		LT
IT091RM58C011	17/02/1998	Ercole	55R102799	55R101782	Barone 2/83	90	O	O	M	93	0	0	S.p.q.r. Comune Di Roma		RM

Maremmana

Individual	Birth date	Father	Mother	Maternal Grandfather	Points	Qualifications			BSI	Morph. Ind.	CSI	Farm
						Breed Traits	Musc.	Dim.				
56CS103919	04/02/1991	Turing	Iumara	56CS052390	90				0	0	0	Fortino Cataldo
56CS105930	19/06/1993		Speranza	56CS051793	90				101	0	0	Coppola Rosario
56CS105987	18/03/1994	Rocchino	Artigliera	56CS100419	90	M	O	M	96	0	0	Pignataro Francesco
56CS106622	31/03/1996	Corvino	Bellafatta	56CS102101	90	M	O	M	91	0	0	Caruso Francesco
56CS106685	24/02/1996	Bellino	Bergamasca	56CS102101	90	M	O	M	0	0	0	Ritacco Ugo
56CS106886	10/08/1996	Corvino	Paparella	56CS100730	90	M	O	M	91	0	0	Caruso Francesco
56CS107008	18/03/1997		Bicornicchiatra	56CZ116745	90	M	O	M	0	0	0	Santoro Vincenzo
56CZ119847	20/11/1988	Giulio	Bianchina		90	M	O	M	0	0	0	Pellizzi Antonio
56CZ127808	01/01/1995	Spagnolo	Rapanella	56CZ108597	90	O	O	M	0	0	0	Martucci Francesco
56CZ127814	07/03/1995	Spagnolo	Cumposta	56CZ123778	90	M	O	M	0	0	0	Martucci Francesco
56CZ128051	15/06/1995		Merulina	56CS101543	90	O	O	B	0	0	0	Azi. Agr Raffaele Malorano™
56CZ128674	21/02/1996	Spagnolo	Anurusa		91	O	O	M	0	0	0	Martucci Francesco
56PZ117172	17/04/1990	Giorgio	Calvina	56PZ101630	90	B	O	M	0	0	0	Palufanti Giovanni
IT078990006675	26/01/2003		Campagnola	56CS106957	90	M	O	M	0	0	0	Mingrone Giuseppe In Bruno
IT137CS034C075	24/01/1998		Belladonna	56CS105916	90	M	O	M	94	0	0	Ritacco Ugo

## Podolica

# anabic



**Associazione  
Nazionale  
Allevatori  
Bovini Italiani  
da Carne**



## HERD-BOOK



**PEDIGREE, MORPHOLOGICAL, PRODUCTION AND  
REPRODUCTION INFORMATION ON THE CATTLE INVOLVED  
IN SELECTION ACTIVITIES FOR THE DETERMINATION OF THE  
GENETIC VALUE OF BULLS AND  
COWS AND GENEALOGICAL CERTIFICATION**

by **Daniele Caimmi**

Ancona APA (Provincial Breeders' Association) Coordinator

## The first auction of the Fabriano Heifers Centre

The first test cycle of the Heifers Centre located in the province of Ancona, hosted by the farm of the Municipality of Fabriano and run by the APA (Provincial Breeders' Association) in collaboration with ANABIC, Istituto Tecnico Agrario (Agricultural Technical Institute), and the Municipality of Fabriano, has been completed.

The results of this first experience are quite satisfactory. In the month of June, 16 heifers entered and, after a three-month period of adaptation to

the pasture, were weighed every 20 days, as specified by the Centre's operational protocol.

On 6 December 2006, a board of experts appointed by the ANABIC scored the heifers: only 2 were judged unsuitable. The CSI was then elaborated and, to our satisfaction, proved to be very positive; in fact, the heifers are all Bull Mothers with a fairly high index.

Lastly, on 26 January 2007 the animals were fertilized according to a mating plan prepared by the ANABIC, mainly taking into account the calving ease.

Thus everything is ready for organizing the auction that will be held on THURSDAY, 12 APRIL at the farm of the Municipality of Fabriano, situated in the locality of Putido – Fabriano.

Breeders will be able to purchase pregnant Bull Mothers adapted to grazing and, in addition, coming from an organic farm.

It should not be forgotten that for breeders residing in the Marches region, a regional grant is available for purchasing livestock at an auction.

So you are all invited to take part in the 1st edition of the Auction, which will feature the following animals:



*The heifers being tested*

Reg. No.	Date of Birth	Pts.	CSI	Father	Mother	Paternal grandfather	Maternal grandfather
IT041990010889	11/05/05	84	103.4	Pargolo 067990001229	PS115396	041000027953	PS110770
IT041990010891	12/05/05	84	109.0	Indio 044AN002C016	025PS003C046	MC131056	MC135143
IT041990010894	17/05/05	88	107.7	Indio 044AN002C016	025PS003C043	MC131056	MC135143
IT041990015169	05/06/05	83	103.4	Opapo 043000004880	043000004996	033MC0688004	043000003661
IT041990015173	28/07/05	84	108.0	Opapo 043000004880	043000066449	033MC0688004	MC128587
IT041990015175	30/07/05	83	103.2	Normo 043000058303	041000025733	043000016071	PS114978
IT041990016382	01/06/05	88	113.6	Nimrod 042000042093	041000043456	PS116651	MC130819
IT041990016396	29/06/05	83	116.6	Nimrod 042000042093	041000028657	PS116651	034AN035C002
IT041990020052	01/07/05	84	110.2	Leo 043000003454	041000082599	PS116651	AN122030
IT042990003627	26/07/05	83	118.8	Mugello 043000017971	042000030104	MC135469	AN123750
IT042990006100	23/06/05	83	106.4	Bilio MC125979	041000045799	MC109752	043000003681
IT042990006103	31/07/05	84	106.4	Bilio MC125979	041000045812	MC109752	AN128313
IT042990007220	02/07/05	83	105.8	Pinolo 042000034294	042000033546	PE105642	AN130757
IT042990008262	20/07/05	84	107.4	Damasco MC131056	042000015219	AN115254	AN126950

For further information, contact the Provincial Breeders' Association of Ancona.

# anabic



Associazione  
Nazionale  
Allevatori  
Bovini Italiani  
da Carne

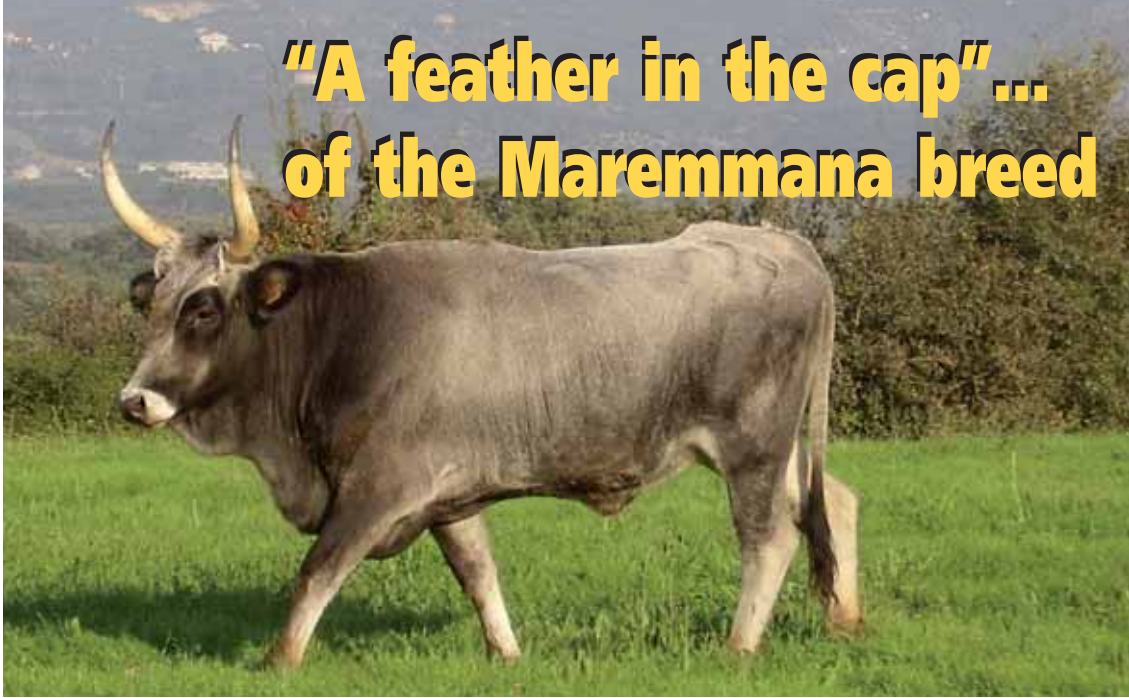


## GENETIC CENTRES



**EVALUATION OF THE PRODUCTION PERFORMANCE  
OF YOUNG MALES THROUGH PERFORMANCE TESTS  
FOR THE PURPOSE OF IDENTIFYING THE BEST SIRE  
TO BE USED FOR ARTIFICIAL INSEMINATION**

# "A feather in the cap" ... of the Maremmana breed



The series of articles devoted to farms which, for the genetic quality of the livestock and the breeders' management skills, are high points in the breeding of the Italian breeds, continues today with the Maremmana. In this issue we are presenting the Torrecchia Nuova farm in the province of Latina.

## Selection comes naturally at Torrecchia Nuova!

**"Mascetti e Sbardella S.n.c." Farm  
owned by Filippo and Gabriele Sardella**

Locality: Torrecchia Nuova, Cisterna (Latina)  
Total farm area: 832 hectares (2,056 acres)  
Size of herd: 150 head of Maremmana cattle

by **Ettore Sbardella**  
**Roberta Guarcini**

The Mascetti Sbardella Farm, a historic stronghold of the Maremmana breed situated in the locality known as Torrecchia Nuova, in Cisterna di Latina, is the emblem of an area that saw the breed as the uncontested queen before the reclamation operations in the Agro Pontino (Pontine Marshes) plain, and was recently host to a successful meeting of AN-ABIC experts held last October. The lovely farm in Torrecchia Nuova, set into a unique environmental context, the particularly precise management of the breeding and, last but not least, the cattle of indisputably high quality lead us to present it through the pages of *Taurus* in a more extensive way than the reviews of the technical meetings and shows have allowed us up to now. The farm, which is currently owned by brothers Filippo and Gabriele Sbardella, has belonged to their family for three generations: sold in 1908 by Prince Don Felice Borghese, it was purchased by brothers Ettore, Giulio, and Filippo Sbardella, who had previously been its tenants. The property, which has an area of 832 hectares

(2,056 acres), is divided between seed crops and grains (maize, wheat, barley, and oats), grazing areas, and woods. The farm's most marginal lands are used for 150 head of Maremmana cattle which have always been registered in the Herdbook, of which 60 are dairy cows. Up to December 2005, there was also a group of Frisona e Bruna \*\*\* Holstein and Brown dairy cows, which had been a part of the farm since 1950; the closing of this part of the activity due to reduced profitability, certainly a painful decision for the Sbardella brothers, was unfortunately a fate shared by numerous farms of central Italy in recent years, particularly in the regions most heavily hit by Blue Tongue disease, which were forced to cope with lengthy restrictions on the handling of their cattle.

### HISTORY

To trace the origins of the farm, it is necessary to go back in time, to the late 1800s.

At the time the farm was quite large, totalling over 5,000 hectares (12,355 acres), and the management, with the reduced cultivation possibilities due to the total lack of mechanical equip-

ment, was focused almost exclusively on the open-pasture raising of Sopravvisana sheep, horses, and Maremmana cattle.

There were over 300 Maremmana dams on the farm, for both meat and work, with the latter category being of primary importance because the Maremmana oxen were, at that time, the tractors of agriculture, the TIRs of the roads, and the motive power of numerous activities.

In his engravings, Piranesi shows the carts drawn by the Maremmana oxen loaded with heavy blocks of travertine, passing in front of the Colosseum; the meat of the bullocks of this breed, the only one bred in the entire Tuscan-Latium Maremma area, was of good quality, well appreciated and commanded a good market price.

For a long time the Maremmana was the leading breed of the Italian farm; for the sake of history, it should be remembered that in the 1930s Italy exported cattle, establishing, with excellent results, several Maremmana breeding farms in Albania and Libya.

The decline of the breed began with the spread of mechanization, and progressively increased with time until a serious crisis was caused in the years 1950-1960 and 1970-1980; during these periods, the oxen, replaced by machines, were no longer used for work, and the meat, considered to be of poor quality, was practically excluded from the market. Because of an inexplicable and senseless xenomania, it was replaced with meat imported from abroad, wrongly thought to be of better quality.

The resulting profound crisis caused a dramatic reduction in the number of Maremmana livestock breeding farms, 90% of which were suppressed.

Believing that the breeding of Maremmana cattle is still the best use of woody pastures and the farm's marginal areas, and also because of their passion, respect, and affection for this noble and prestigious breed, the Sbardella farm has always carried on with its breeding, even if with smaller numbers, and continued the selection work for the genetic improvement of the breed up to the present time.

### PRECISE MANAGEMENT

The recent changes in the farm's production policy have opened larger areas for the Maremmana herd, which lives outdoors all year round, exploiting both the natural perennial polyphyte pastures and the wooded bush areas that distinguish the most marginal areas of Torrecchia Nuova. The characteristics of rusticity, frugality,

structural functionality, resistance to disease, fertility, striking maternal aptitude, and longevity, an acquired heritage for the Maremmana breed, make it competitive and modern, in harmony with the current



Centre, Filippo Sbardella

production policies, focusing more on quality productions obtained from livestock in conditions of good welfare and with a low environmental impact than on a forced extreme evolution of production records. Anyone who has had the possibility and the privilege to visit the farm will have surely been surprised by the tone of the cattle, in excellent conditions regardless of the different production phases. In fact, each animal has at its disposal three hectares (7.4 acres) of polyphyte grazing land, and in the winter the animals can find shelter in the bush, feeding on tree and shrub species. During the harsher seasons, both summer and winter, their diet is supplemented with hay produced on the farm. The limitation of the feed costs and the fact that no shelters are needed make the activity more competitive from the economic standpoint, but it would be ingenuous to think that the farm's "low management" is synonymous with approximation and superficiality. Indeed, the Torrecchia Nuova herd is followed precisely and with great passion. This translates into productive efficiency of the cows, which are fertile, long-lived, with correct and functional udders, and capable of ensuring rapid growth in their calves. The calvings, which are totally spontaneous, are concentrated in the spring, the period that also coincides with the marking of the animals born the previous year. On the farm, the calvers are followed with particular care, checked regularly also thanks to routine pregnancy check-ups, which make it possible to have a good idea of the calving date. In April, a bull is introduced into each herd of cows, and will remain until the end of August. The service groups are controlled and the bulls are chosen on the basis of their pedigree and morphology. The sires currently working on the farm are Orso S., Primo S., and Petronio dell'Alberese, the latter purchased from the

Alberese Bullock Selection Centre. Among these bulls, Orso S. stands out for the length of his trunk, muscle development, and rump correctness, Primo S. displays considerable typicity and style, and Petronio, younger than the other two, has a pedigree totally outside of the lines present in the herd. The Sbardella brothers devote particular care to the genetic planning of their cattle, avoiding closely related bloodlines and making sure there is the broadest possible variability in terms of lines and families. In the past, the farm has also resorted to crosses with Charolais bulls for the production of crossbred animals for fattening. This practice was suspended years ago, also owing to the progressive improvement of the beef conformation reached by the Maremmana thanks to selection.

#### PRODUCTION POLICY

For centuries the dynamic aptitude of the Maremmana made it the top breed for the production of work oxen, an important source of income for the Mascetti Sbardella farm up until the last post-war period. Today the animals bred in Torrecchia Nuova are mostly used for beef production. Once they are weaned, usually in October, and at an average age of 6 months, the male calves are sorted to identify candidates for entering the Alberese Bullock Selection Centre. As for the females, the selection of the heifers for replacement servicing takes place at the age of one year. The remaining animals, mainly males, are sold for reproduction or destined for fattening, which is carried out with the farm's own products. The fattened heifers are butchered at around 15 months of age and a live weight of around 400 kg. At the same age the males weigh an average of 500 kg and are sold to local butchers. Up to today, the females not used for the farm's replacement servicing have been destined for fattening but, considering the growing number of breeders interested in purchasing heifers, it is presumable that they, too, will find places on other farms in the future. After a long phase during which the Maremmana breed saw its numbers decrease, in recent years there has fortunately been a distinct reversal of the trend, which has led to the doubling of the number of animals registered with the Herdbook, which now includes 8,000 animals. This has also been thanks to the Community aid provided by the EU for breeds whose numbers are decreasing. If we add to this the obtaining of a DOP (Protected Denomination of Origin) mark, for which the procedures have already been initiated, the prospects for the breed's future appear encouraging.

#### THE ALBERESE BULLOCK CENTRE: A VALUABLE POINT OF REFERENCE

The Mascetti Sbardella farm regularly sends the best male animals to the Alberese Bullock Selection Centre, which has reached its 10th cycle of performance tests. The bull Giulianello has by now become legend: with an average daily gain of 1,700 grams, he was purchased at the 1998 auction for Lire 8,200,000, bringing a knock-down price that has yet to be surpassed. The constant improvements achieved over a relatively short time, as far as the early maturation and muscle development of the tested bulls are concerned, convinced Filippo Sbardella to contact the centre for the purchase of bulls. An example of this decision is Petronio dell'Alberese, who completed the 2003 cycle and was purchased at the next year's auction for his pedigree totally unrelated to the lines present on the farm.

#### THE SHOWS, WHAT A PASSION!

The Torrecchia Nuova farm is a fixed presence at the Maremmana show events, which have always been honoured with competitive teams rewarded, over the years, with flattering results. Among the most significant placements, worthy of note are the grand champion titles for senior and junior females won at Bastia '98, where the farm had been present with an extremely competitive team. This success was repeated at the National Show of Campoverde (Latina) in 2000, when the farm won the award for Junior Female Grand Champion. The beautiful National Show of Al-lumiere 2006 further enriched the farm's record of honours with the brilliant results achieved by Primo S., Senior Male Reserve Champion, and Energia, a lovely 11-year-old dam who was named Grand Senior Female Reserve Champion and won the trophy named after Lucio Migni, for the cow with the best productive career. It should be pointed out how the morphological model of the cattle selected on this farm is extremely modern in its striking muscle development, width of transverse diameters, length, and trunk volumes, combined with an undisputable typicity. With similar bases, the successes attained in shows are "icing on the cake".

#### A TRADITION LOOKING TOWARD THE FUTURE

The Pontine Marshes, before the reclamation operations that transformed them into an enclave reserved for intensive agriculture, were a heav-

only paradise for the Maremmana, and the homeland of the greatest “butteri” (cowboys), locally called “cavalcanti” (riders). Those who were able to see that world, which has disappeared today, still speak of it with nostalgia, and this gives an idea of how strongly it was felt. The grazing lands and bush areas of Torrecchia Nuova, with the free-ranging cattle tended by cowboys on horseback are a captivating and spendable image for the farm, which is planning to convert some of its beautiful farmhouses into tourist farm structures. In fact, the shortening of the production chain is an interesting way to enhance the farm’s productions, and the Sbardella brothers are considering this option, also to be able to adequately place the fine meat produced on its lands. Moreover, being a faunal-hunting site with an attractive landscape, selective hunting is another development possibility. The ancient tradition characterizing the Maremmana breed thus becomes an opportunity for Torrec-



*Two splendid Maremmana specimens*

chia Nuova which, in addition to being able to boast a unique historic heritage, looks to the future with entrepreneurial spirit and great passion, for which we can only express to Filippo and Gabriele our sincerest best wishes for their success!

by *Gaia Martuscelli and Chiara Berti*  
Genetic Evaluations, Research and Development Office

# ANIMAL WELFARE: What has changed since 1 January 2007

**F**inding a definition of animal welfare that can include all the aspects concerning the physiological and psychological elements of an animal has been a subject of discussion among sector scholars in recent years. According to the United Kingdom's Farm Animal Welfare Council (FAWC), the animal must be free of thirst, hunger, malnutrition, discomfort, pain, diseases, fear, and anxiety, and must be able to express the behavioural traits of its species. To cite Broom and Johnson's definition, "The welfare of an individual is its state as regards its attempts to cope with its environment." From this definition it emerges that welfare is a quantitative, not qualitative, variable: that is, there are various levels of welfare in relation to the various environmental conditions.

It is possible, in fact, that animals suffer certain "crises" deriving from the sudden change in environmental conditions: weaning, transport, diet changes, and the formation of groups are the most typical examples. Presupposing the onset of these "crises" which can be associated with particular phases, it is, however, important to ascertain the animals' environmental adaptation attempt during the phases following the stressful event considered. For example, it is normal for there to be alterations after a lengthy transport stress; in this sense, it is the legislator's duty to regulate this practice in a precise way in order to define its limits of acceptability and prevent the consequences being exceedingly serious. Careful observation can enable the operator to evaluate the degree of the animal's well-being on the basis of the adaptation effort needed and, of course, the effectiveness of such an effort. Therefore, the level of welfare will be lower if the animal is forced to make a considerable, lengthy effort to adapt to the environment, and it will be seen in changes in biological functions. Another and decisive worsening of the situation will derive from an animal's inability to react with an adequate adaptive response to the environmental conditions. (Amadori M. et al). The difficulties in relating to the environment are brought together into actual indicators of poor welfare, for example: lower life expectancy, a worsening of growth and

reproductive functions, the presence of traumas and injuries, greater susceptibility to diseases, and anomalous behaviours (stereotypies). Suffering and poor welfare often appear together, but it may happen that the animal does not suffer, even if it is in conditions of poor welfare. This means that the term of "welfare" has a rather broad meaning. For example, an injured animal may not feel pain, thanks to the effects of the analgesic opioids of endogenous origin (endorphins) or the administration of analgesics. It is obvious that the degree of welfare would be lower if the animal also felt pain, but just the presence of injuries alone must be considered an indicator of poor welfare.

Animal welfare is an aspect that is acquiring increasing importance. The consumer, as shown by university studies (Musto M.), is increasingly "sensitive" to the themes connected with respect for animals, since it is considered decisive for the quality of the entire production chain. In fact, at the time of purchase the consumer seems to be influenced not only by the price of the product, but wants to be certain that it has been obtained in a situation of respect of the animal and the environment.

For the regulation and protection of animals during transport and the related operations, the European Council issued, on 22 December 2004, regulation no. 1/2005, taking effect on 5 January 2007. The Protocol on protection and welfare of animals requires that in formulating and implementing agriculture and transport



**Table 1**  
Available spaces to be guaranteed for each animal during road transport

Category	Calf live weight	Area
Young farm-bred calf	50 kg	0.30-0.40 m <sup>2</sup>
Medium calves	110 kg	0.0-0.70 m <sup>2</sup>
Heavy calves	200 kg	0.70-0.95 m <sup>2</sup>
Medium livestock	325 kg	0.95-1.30 m <sup>2</sup>
Large-size livestock	550 kg	1.30-1.60 m <sup>2</sup>
Very large-size livestock	>700 kg	>1.60 m <sup>2</sup>

policies, the Community and the Member States are to pay full regard to the welfare requirements of animals. The Council adopted rules in the field of the transport of animals in order to eliminate technical barriers to trade in live animals and to allow market organisations to operate smoothly, while ensuring a satisfactory level of protection for the animals concerned.

The Member States see that the following measures are applied:

**1) The duration of the journey:** for journeys of over 8 hours, called “long journeys”, the transporter must fill out the “journey log”, containing 5 sections (journey planning, place of departure, place of destination, transporter’s statement and form for reporting of anomalies). For this kind of journey, the competent authorities issue a certificate of approval to means of transport that conform to the requirements stated below. For journeys of under 8 hours (but over 65 km), the transporter must fill in a register, giving simple indications concerning the load, the unloading of the animals, the date and place of disinfection, and the expected journey duration.

**2) The means of transport** must be constructed in such a way that the faeces cannot leak or fall out of the vehicle, and must have adequate equipment for the cleaning and disinfecting to be carried out after each journey. They must be equipped with a ventilation system designed, constructed, and maintained so that at any time the temperature inside the vehicle will be guaranteed to be between 5°C and 30°C. The vehicle must also have an alarm system to warn the driver when the temperature in the compartments carrying the animals touches the top or bottom limit. The ventilation system must ensure a regular distribution of air (rated ca-

capacity of 60m<sup>3</sup>/h/KN of useful load) and be able to function during stops for at least 4 hours. The temperature and ventilation data must be recorded by a specific control system that can be checked by

the competent authorities.

Starting 1 January 2007, new road transport vehicles making journeys longer than 8 hours must be equipped with a navigation system allowing the recording and transmission of information equivalent to those mentioned in the journey log. This system must keep the recordings made for at least three years, permitting their checking by the competent authorities.

Each means of transport must provide for the space to be available for each animal as shown in Table 1. The areas may vary on the basis not only of the weight and dimensions, but also of the physical condition of the animals, the weather conditions, and the probable duration of the journey.

**3) The professional categories:** in addition to the technical novelties envisaged by the directive, new professional categories are defined

- the transporter, “any natural or legal person transporting animals on his own account, or for the account of a third party”; the transporter designates a natural person responsible for the transport and ensures that the information on the scheduling, execution, and completion of the part of the journey under his responsibility may be obtained at any time.
- the organiser, “a transporter who has subcontracted to at least one other transporter for a part of a journey; or a natural or legal person who has contracted to more than one transporter for a journey; or a person who has signed Section 1 of the journey log”, plans the long journeys within the EU and to third countries, ensuring that the animals’ welfare is guaranteed for each journey.
- the keeper, “any natural or legal person, except a transporter, in charge of or handling animals whether on a permanent or temporary basis”, checks that all the animals arriv-

ing in a place of transit or place of destination are fit for transport, checks for any pathologies or injuries and checks all the items listed in the journey log.

- 4) **Control posts**, formerly referred to as staging points, are places for resting animals for a period of at least 12 hours; each control post has a recognition number and is under the control of an official veterinarian who guarantees the observance of the regulations. Each control post must be situated, designed, built, and managed so as to guarantee a sufficient biosafety to prevent the spread of diseases and to guarantee cleaning and disinfection operations in full compliance with the animal safety regulations. Between one consignment and the next, there must be a sanitary break of at least 24 hours after a maximum of six days of use.

Furthermore, starting 1 January 2007, Legislative Decree 331/98 (implementation of Directive 97/2/EC laying down minimum standards for the protection of calves), identifying the requirements for the housing of calves. From 1 January, the specifications stated below will also be applied to farms with fewer than 6 calves; moreover, as per Regulation no. 1782/2003, access to the direct income support in agriculture will be conditional on compliance with the regulations in effect relating to animal welfare.

The decree states that no calf over 8 weeks of age shall be confined in an individual pen unless ordered by a veterinarian for isolation from the group for diagnostic and therapeutic treatment. The width of the individual pen must be at least equal to the height of the calf at the withers, and the length must be at least equal to the calf's body length. The pens must have perforated dividing walls which allow the calves to have direct visible and tactile contact.



**Table 2**  
Free space available for each calf in a stall

Calf live weight	Area
<150 kg	≥1.5 m <sup>2</sup>
>150 kg and <220 kg	≥1.7 m <sup>2</sup>
>220 kg	≥1.8 m <sup>2</sup>

The buildings must be adequately designed on the basis of the herd numbers, in order to guarantee sufficient space for the animals, i.e. the available free space in which the animal can turn around and lie down without trouble.

The stalls must be built in such a way as to allow each calf to lie down, stand up, and care for itself without difficulty.

The floors must not be slippery and must permit an easy collection of faeces. Temperature, humidity, and airing of the building must be monitored and kept under control, avoiding accumulations of ammonia and carbon dioxide. The animals must be guaranteed a certain number of hours of light and dark. A diet suitable for their age and weight and which meets their behavioural and physiological needs must be administered, in order to guarantee good health conditions. For this purpose, the feed must have an iron content sufficient to reach a haemoglobin level of at least 4.5 mmol/litre: a daily dose of fibrous feed must be administered to each calf after the second week of age, and the quantity must be raised from 50 to 250 grams/day for calves between 8 and 20 weeks of age. Each calf must receive bovine colostrum as soon as possible after birth, and in any case within the first 6 hours of life. Furthermore, cauterization of the horn buds and castration are allowed if performed before three weeks or sexual maturity, respectively, in any case taking care to limit suffering as much as possible.

## REFERENCES

www.sinab.it; *Taurus Speciale*, Year XVIII – No. 7, 2007 “Valutazione del benessere del bovino da carne” (Evaluation of the welfare of beef livestock), Napolitano F., Grasso F., Brughieri A., Adduci F., Di Francia A., De Rosa G.; “La potenziale accettabilità di prodotti animal-friendly da parte del consumatore” (The potential acceptability of animal-friendly products by the consumer), Musto M. *Official Journal of the European Union*, 5.1.2005; Council Reg. EC No. 1/2005, *IZETA* N. 22/2006, pp.48-54. *La Settimana Veterinaria* No. 546, 27/12/2006

**AZIENDA AGRICOLA**

# **“LA VIOLA”** S.r.l. *di Gian Michele Graziani*

*Our calling card?  
... 600 head of Romagnola cattle  
undergoing selection...*



*La Viola Ilaria, Senior Female Grand Champion  
2004 Reggio Emilia National Show*

**Contact us!**

**SIRES, SEMEN, AND EMBRYOS ALWAYS AVAILABLE**

LA VIOLA S.r.l. Via Cogollo, 30 - 48012 BAGNACAVALLO (RA)  
Tel. 0545.61909 cell. 337.604272 - e-mail: la-viola@libero.it



**Semen and embryos directly from Italy**

**Seme ed embrioni della migliore genetica italiana**

Contact [www.anabic.it](http://www.anabic.it) • [igs@anabic.it](mailto:igs@anabic.it) • fax ++39.075.607.598 • tel ++39.075.607.51.21

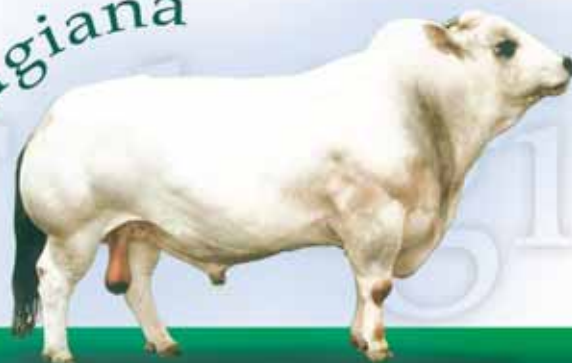
*Chianina*



*Romagnola*



*Marchigiana*



**Italiana Genetica & Servizi • San Martino in Colle • 06070 Perugia**